

Makita

230mm (9") Angle Grinder

240v



GA9070X1

230mm (9") Angle Grinder

The 230mm (9") angle grinder (GA9070X1) features a high performance 2,400-watt motor for heavy duty applications.

Fitted with Active Feedback sensing Technology (AFT), the GA9070X1 can detect kickback or if the wheel becomes jammed and rotation ceases. In both cases the tool will automatically shut down for safety.

If AFT shuts down the GA9070X1, the mechanical brake ensures the wheel will rapidly cease rotating to protect the user, even if power is disrupted at the source. The addition of the anti-restart function means the user can release and press the two-stage paddle switch to reengage operation.

The GA9070X1 comes standard with numerous ergonomic features, including; soft start, anti-vibration housing, and vibration proof grip to help minimise user fatigue.



Product Overview

240V

Soft Start

AFT
Active Feedback
Sensing Technology



Mechanical Brake

Anti-Restart Function



Anti-Vibration Housing

Two Stage Paddle Switch

High Performance 2,400W Motor

Product Specification Sheet

240V



- **Soft Start** – When the trigger is pressed the wheel will start slowly to reduce initial start up shock, then rapidly accelerate to maximum speed.
- **Active Feedback Sensing Technology (AFT)** – To enhance user protection sensors can detect kickback or if the wheel jams causing rotation to suddenly cease. In both cases, AFT will automatically shut down the tool.
- **Mechanical Brake** – When the user releases the paddle switch, AFT shuts down the tool, or the unit loses power the mechanical brake will rapidly stop the unit.
- **Anti-Restart Function** – To enhance safety, if the GA9070X1 shuts down the user can release and press the paddle switch to reengage the unit.
- **Anti-Vibration Housing** – The GA9070X1 features an anti-vibration housing and includes a vibration proof grip to help minimise user fatigue.
- **Paddle Switch** – Two-stage paddle switch means the unit will stop operating if the user releases the trigger.
- **High Power Output** – Features a powerful 2,400 watt motor for high performance applications.

Wheel Diameter	230mm (9")
Hole Diameter	22.23mm
Spindle Thread	M14
No Load Speed	6,600rpm
Continuous Rating Input	2,400W
Overall Length	506mm
Net Weight	6.3kg
Power Supply Cord	2.0m

Performance



2,400-Watt motor allows for continuous heavy-duty operation.

Durability



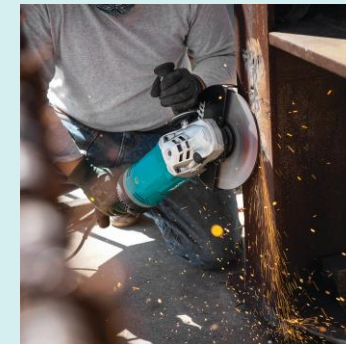
Engineered for increased durability and longer tool life.

Safety



Active Feedback sensors (AFT), mechanical brake, anti-restart, and soft start.

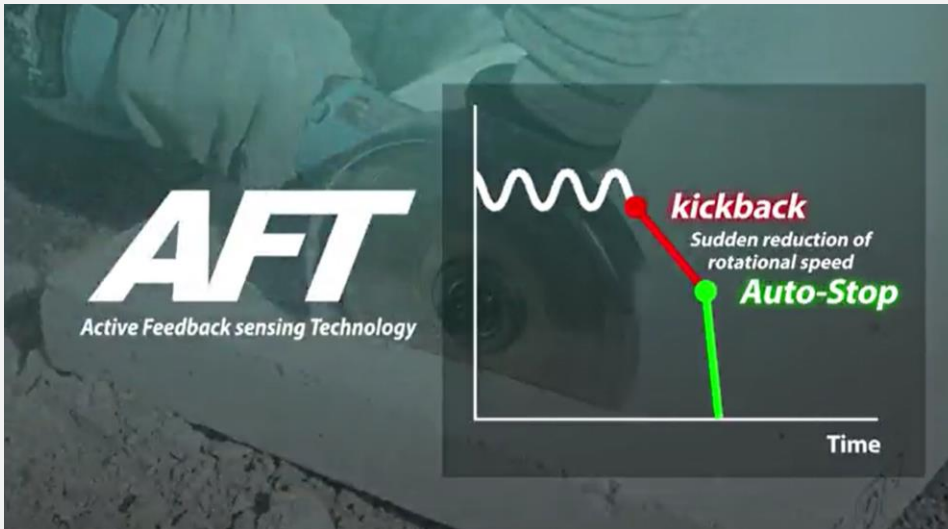
Comfort



Anti-vibration housing and vibration proof grip minimise user fatigue.

Active Feedback Sensing Technology (AFT)

If the GA9070X1 detects a sudden decrease in wheel rotation, which usually occurs when the wheel binds, the tool will automatically shut down reducing kickback to protect the user.



Our Range

240V

	NEW – GA9070X1	NEW – GA9071X1	GA9040S01	GA9030X05	GA9063RX02	GA9061R	GA9060
							
Wheel diameter	230mm (9")	230mm (9")	230mm (9")	230mm (9")	230mm (9")	230mm (9")	230mm (9")
Handle Type	Straight Handle	D-Handle	Straight Handle	Straight Handle	D-Handle	Straight Handle	Straight Handle
No Load Speed	6,600rpm	6,600rpm	6,600rpm	6,600rpm	6,600rpm	6,600rpm	6,600rpm
Continuous Rating Input	2,400W	2,400W	2,400W	2,400W	2,200W	2,200W	2,200W
Active Feedback Sensing Technology (AFT)	Yes	Yes	No	No	No	No	No
Brake System	Mechanical Brake	Mechanical Brake	No Brake	No Brake	No Brake	No Brake	No Brake
Anti-Restart	Yes	Yes	No	No	Yes	Yes	No
Soft Start	Yes	Yes	Yes	No	Yes	Yes	No
Anti Vibration Housing	Yes	Yes	No	No	No	No	No
Vibration Proof Grip	Yes	Yes	Yes	Yes	Yes	No	No
Overall Length	506mm	506mm	511mm	511mm	450mm	450mm	450mm
Net Weight	6.3kg	6.4kg	5.5kg	5.1kg	5.8kg	5.7kg	5.5kg

Standard Accessories		
	194543-3	Vibration Proof Grip
	782034-2	Lock Nut Wrench 35

Optional Accessories		
	122913-6	230mm Cutting Guard
	198379-2	230mm Dust Collecting Wheel Guard Plunge
	Link to Website	Grinding Wheels
	Link to Website	Cutting Wheels
	Link to Website	Diamond Cutting Wheels